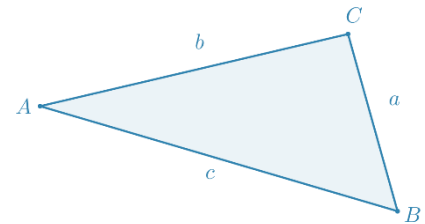


Neke površine mnogokuta – podsjetnik za površnu baze nekih poliedara

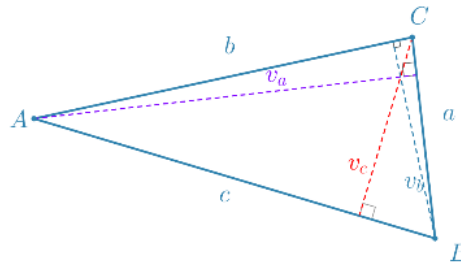
- raznostranični trokut:

- ✓ Heronova formula:

$$B = \sqrt{s(s-a)(s-b)(s-c)}, \quad s = \frac{a+b+c}{2}$$

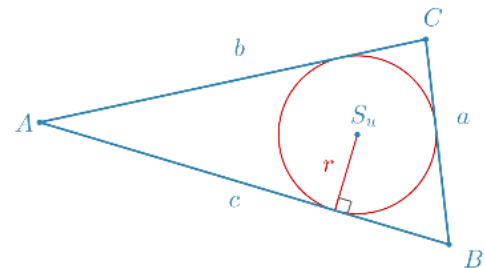


- ✓ $B = \frac{a \cdot v_a}{2} = \frac{b \cdot v_b}{2} = \frac{c \cdot v_c}{2}$



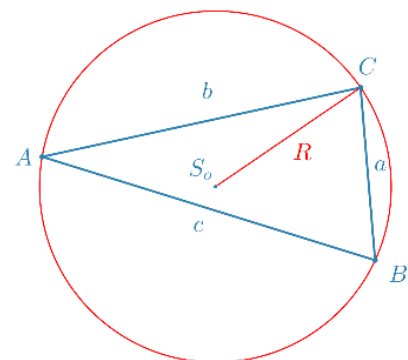
- ✓ $B = r \cdot s$

r ... polumjer trokutu upisane kružnice



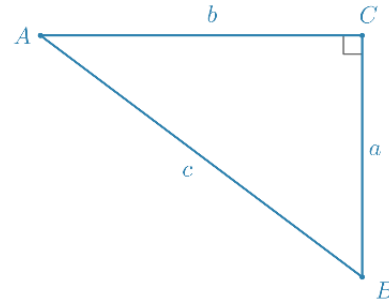
- ✓ $B = \frac{abc}{4R}$

R ... polumjer trokutu opisane kružnice

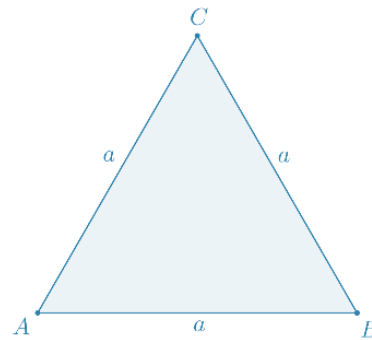




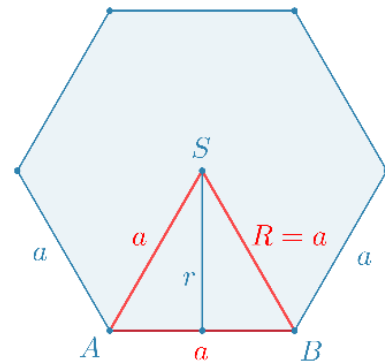
- pravokutni trokut: $B = \frac{ab}{2}$



- jednakostranični trokut: $B = \frac{a^2\sqrt{3}}{4}$



- pravilni šesterokut: $B = 6P_{\Delta} = 6 \cdot \frac{a^2\sqrt{3}}{4} = \frac{3a^2\sqrt{3}}{2}$



- pravilni osmerokut: $B = 8P_{\Delta} = 8 \cdot \frac{ar}{2} = 4ar$

