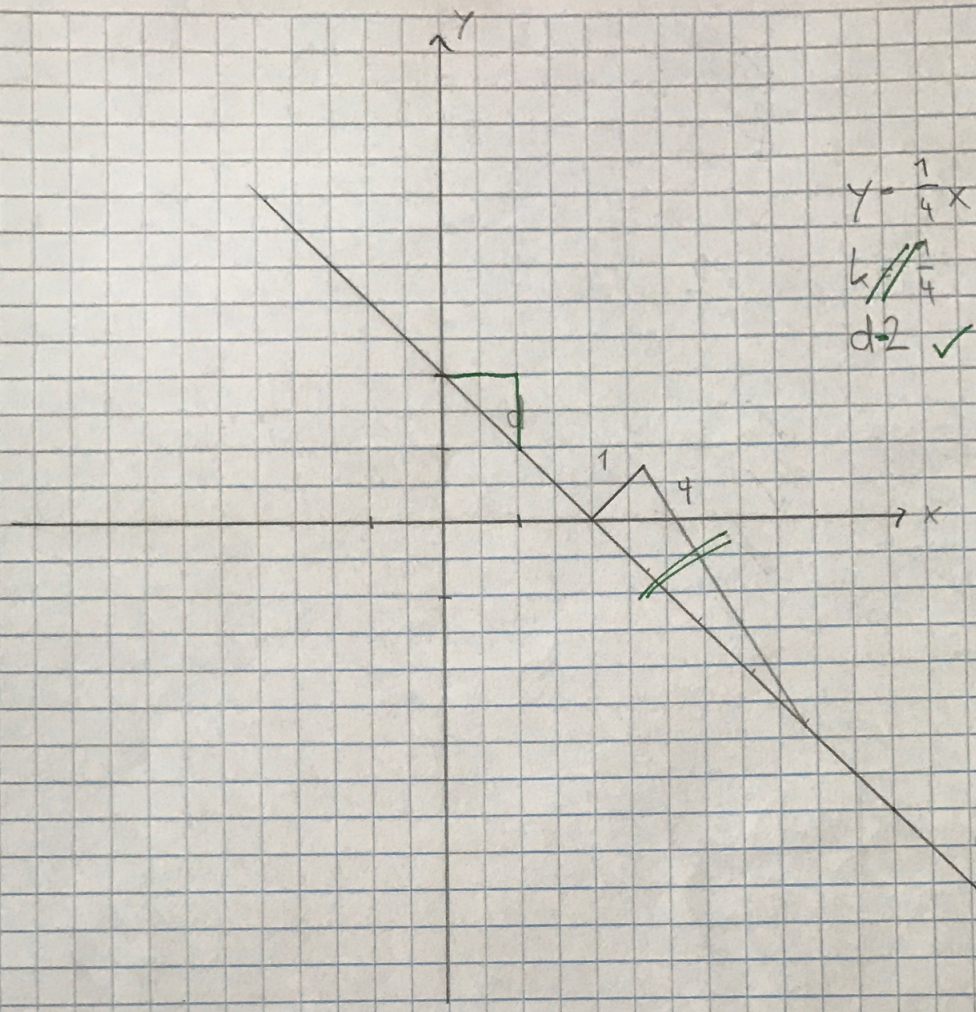


1.)

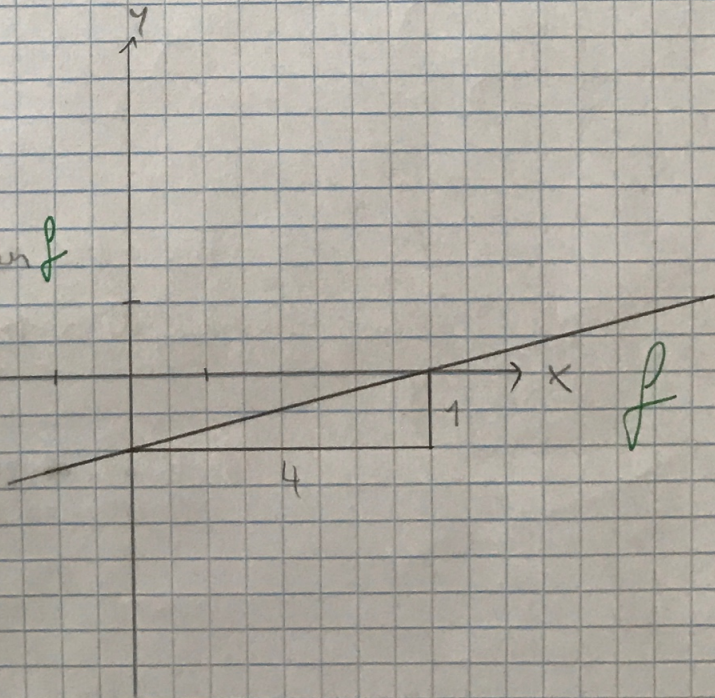


$$y = -\frac{1}{4}x + 2$$
$$k = -\frac{1}{4}$$
$$d = 2 \checkmark$$

2.)

$$k = -\frac{1}{4} \checkmark$$
$$d = \setminus$$

steigend f inhomogen f

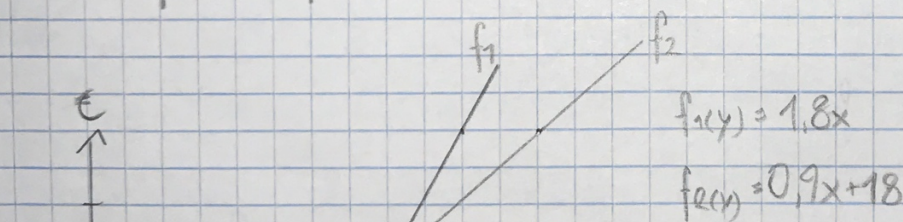


3.) $f(x) = 3x - 1,5$ ✓
 $g(x) = \frac{1}{3}x + 3$ f
 $h(x) = 0$ ✓
 $i(x) = +0,5x + 0,5$ f

- 4.) 1. 0-4 min ✓
 2. ab 4 min ✓
 3. ca: 1,5 min ✓
 4. 90 km/h ✓

5.)

Rkg	Obsthändler	Wachau
1	1,80€	18,90€
5	9€	22,50€
10	18€	27€
15	27€	31,50€
20	36€	36€
25	45€	40,50€



A: Ab mehr als 20 kg lohnt es sich nach Wachau zu fahren.

